

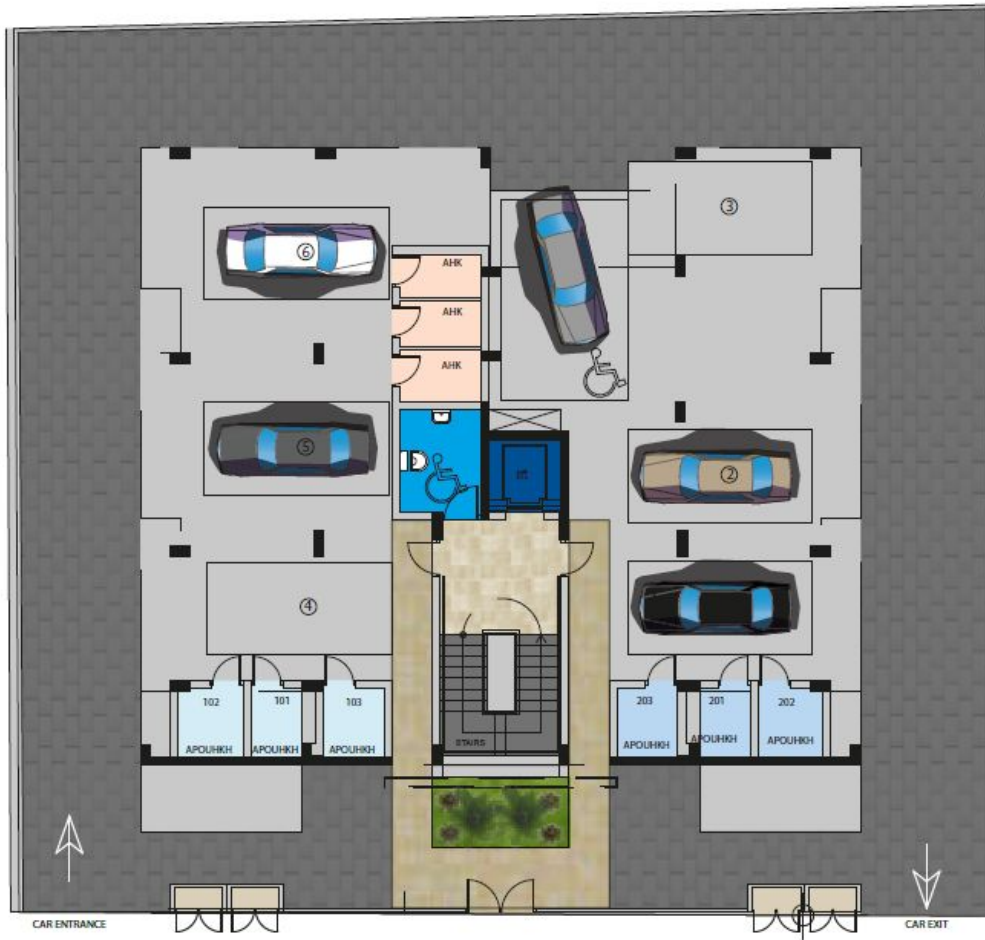








typical floor plan



ground floor plan / parking place



VOLTAIROU

Apollo
residences

aurora Residences

CASTLE
HOTEL

MASALIAS

DOUREIOU IPPOU

Haagen
Dazs

Bank of
Cyprus

KFC

VOIOTIAS

LONDA
BEACH HOTEL

VASILEOS GEORGIOU 1

APOLLONIA
BEACH HOTEL

STARBUCKS

BEACHFRONT PROMENADE

Apollo Residences						July 2010
Property Reference	Property Type	Beds	Bath rooms	Covered Area	Storage Room	Price in Euro
101	Apartment	2	2	105.54	4	415.000
102	Apartment	2	2	102.84	4	Sold
103	Apartment	1	1	66.21	4	261.000
201	Apartment	2	2	105.54	4	423.500 RSVD
202	Apartment	2	2	102.84	4	415.000
203	Apartment	1	1	66.21	4	270.000

Covered parking 5.000 EURO per place

Storage room 5.000 EURO per unit

Only few locations can offer you the exhilarating experience of being so intimately close to the Mediterranean beach and at the same time offer easy access to the tourist area of Limassol. Apollo Residences is a block of six apartments of 1 & 2 bedrooms with high standards & excellent quality. Located just in 350m away from the most spectacular beaches of Apollonia Hotel 5*.

APPOLON RESIDENCES TECHNICAL SPECIFICATIONS

1. **Foundation and frame work** General Construction (foundations, pillars, beams and slabs made of reinforced concrete according to the civil engineers static and antiseismic study.
2. **Walls** Hollow clay bricks
3. **External wall rendering** Plastering. Decorative with “Grafiato”
4. **Doors and windows**

Entrance door	Solid wood €1.000
Internal doors	Hollow door of varnished beech timber
Externally	Imported sliding doors and windows of powder coated aluminum, double-glazing “Alumil”.
5. **Kitchen** Wide choice of Italian kitchen €200 per running m
6. **Wardrobes** Wardrobes and fitted cupboards €200 per running m
7. **Floor and** Bath, shower and Ceramic floor tiles €15/m²

	wall tiles	toilet rooms	Glazed wall tiles
		Kitchen	Ceramic tiles €15/m ²
		Living interior floors	Italian ceramic tiles €18/m ²
		Bedroom floors	Italian ceramic tiles or laminate parquet €21/m ²
		Internal staircases and steps	Ceramic tiles €28/m ²
		Verandahs	Ceramic tiles €15/m ²
		External staircases	Ceramic tiles €28/m ²
		Kitchen wall	Tiles to the space between the work bench and cabinets €15/m ²
8	Paints	Walls and ceiling	Emulsion paint
		Interior timberwork	Clear varnish, matt finish
9	Sanitary fittings	White color of deluxe quality and the fitting is chrome plated	
10	Electrical Installation	Concealed circuits and all other installation in compliance with the Electricity authority of Cyprus (EAC) regulations, will comprise of circuits for lights fixtures and power points for kitchen appliances, TV, telephone, points in bedrooms, living room, kitchen. Provision for T.V. Satellite.	
11	Plumbing	Plastic piping for hot and cold water. Chrome taps, water mixers and other fixtures are included	
12	Cold water supply	From local authority's mains in configuration with a shortage tank of one ton capacity.	
13	Hot water supply	Via a dual system of electrical/solar heater	
14	Heating-cooling	Provision for split unit heating-cooling system (wall mounted) in the living room and all bedrooms. The actual units are not included.	
15	External work	Paved walk ways of stonecrete Fencing: Concrete wall .	
16	Parking	parking place as showed in the plan	

All Prices Include 15% VAT